

Montana **Grandparents**
Services **Raising**
for **Grandchildren**



(406) 994-3395
grg@montana.edu
www.montanagrandparents.org



MONTANA
STATE UNIVERSITY

EXTENSION

Montana Grandparents Raising Grandchildren Project



MSU Extension, Family & Human Development Program provides the leadership for the **Montana Grandparents Raising Grandchildren (GRG) Project** to help support grandparents across Montana who have taken on the responsibility for raising their grandchildren.

The Montana GRG Project:

- ~Develops local support groups and contacts for grandparents raising grandchildren.
- ~Provides training for support group leaders and parent educators.
- ~Offers parent education classes for grandparents raising grandchildren.
- ~Coordinates a statewide task force to address the needs of grandparents raising grandchildren.
- ~Publishes a newsletter three times a year.
- ~Produces MontGuides (fact sheets) for grandparents raising grandchildren.
- ~Operates a website with references and information on families and parenting.

For more information on the GRG Project please visit www.montanagrandparents.org or contact us at **(406) 994-3395** or grg@montana.edu.



MONTANA SERVICES FOR GRG'S

General Services & Assistance	2-3
Financial Assistance	4
Medical & Insurance Assistance	5
Education & Childcare Assistance	6
Legal Assistance	7
Food & Nutrition Assistance	8
Other Useful Contacts	9-10
Assistance for Native American Families	11-12



GRG Project Local Contacts

There are currently over 30 GRG contacts and support group facilitators located throughout the state. Visit

<http://www.montanagrandparents.org/Contacts.html> to see the current listing.



Montana State University Extension Family & Consumer Sciences

The **MSU Extension Family & Consumer Sciences Program** website features information and services concerning family finance, family and human development, food and nutrition, housing and environmental health, and community health.

Visit <http://www.montanafamilies.info>

GET MORE
INFO...



eXtension Community

Whether you are raising grandchildren or anticipating raising grandchildren, the **eXtension Family Caregiving** website has information to help you. The site provides valuable information to assist you with a variety of needs, including child guidance and discipline, nutrition and feeding, child development, legal issues, family finances, and much more.

Visit <http://www.extension.org>

GET MORE
INFO...



AARP

AARP offers information for GRGs through the **Grandparent Information Center (GIC)** and grandparent links on their web site.

The GIC offers:

- A web site with articles, fact sheets, and a message board.
- Initiatives around work issues for grandfamilies, benefits outreach, and financial literacy.
- Booklets in English and Spanish.
- *The Grandcare News*, a free newsletter for grandparents who are raising their grandchildren.
- Information and referral to grandparent support groups and agencies.
- Networking and assistance to local, state, and national organizations.
- Research about grandparenting.
- Advocacy for grandparents in collaboration with AARP's State Affairs and Legal Advocacy groups.

Visit <http://www.aarp.org/families/grandparents/>

GET MORE
INFO...

NCOA and AARP Benefits Check Up

Answer a few confidential questions and this database tells you which federal, state, and local programs you might be eligible for and how to apply. The site is provided by the National Council on Aging;

AARP is a national outreach partner for the site.

Visit the website at <http://www.benefitscheckup.org>



Because we're stronger together®

Generations United

Generations United's **National Center on Grandfamilies**

works to enact policies and promote programs to help grandfamilies address challenges in the areas of housing, education, health, law and finances. You will find fact sheets, policy papers and statistics pertaining to grandparents and other kinship caregivers.



Visit <http://www.gu.org/>

GET MORE
INFO...

Grandfamilies.org

The **Grandfamilies State Law and Policy Resource Center** serves as a national legal resource in support of grandfamilies within and outside the child welfare system. This site provides:

- A searchable database of laws and legislation affecting grandfamilies both inside and outside the foster care system for all 50 states and the District of Columbia.
- Summaries and comparisons of laws and legislation for legal topic areas, including practical implementation and implementation and advocacy ideas.
- Personal stories.
- Relevant resources and publications.
- Technical assistance and training to state policymakers, advocates or other interested parties.

Visit <http://www.grandfamilies.org/>

GET MORE
INFO...

Montana 211

You can search by county or city to find local resources such as childcare, food & nutrition resources, employment assistance and many others.

Call **211** or visit <http://www.montana211.org/>

GET MORE
INFO...

Bridge to Benefits

Montana Bridge to Benefits is the product of a partnership between Rural Dynamics Incorporated and the Children's Defense Fund. Bridge to Benefits is a multi-state project sponsored by the Children's Defense Fund focused on improving the well-being of families and individuals by linking them to public work support programs and tax credits. It's easy, confidential, and free to learn what services you may be eligible for.

Visit <http://mt.bridgetobenefits.org/>

GET MORE
INFO...



Montana Department of Public Health and Human Services

This site, run by the State of Montana, will give you information on how to apply for assistance (financial, child care, energy, food & nutrition, health insurance, etc.). It will also provide information on child & family services, including adoption, foster care, and kinship caregiving. Call **(866) 820-5437** to report child abuse or neglect.

Visit <http://www.dphhs.mt.gov/>

GET MORE
INFO...

USA.gov

This site, provided by the United States government, provides information and links to benefits and assistance, health & safety resources, data and publications, and state resources.

Visit <http://www.usa.gov/Topics/Grandparents.shtml>

GET MORE
INFO...



Temporary Assistance for Needy Families (TANF)

TANF is a cash assistance program for families with children, which promotes the values of work, responsibility, and family. There are work requirements and a time limit on this assistance. TANF services may include:

- Cash assistance for the purchase of basic needs such as food, clothing, housing and personal care items.
- Work supports such as transportation, vehicle repair, and items that assist individuals with continuing employment, becoming employed, or fulfilling the work requirements.
- Education and training, excluding tuition.

Child-Only TANF Payments

Child-only TANF is a program that provides benefits solely for the children in the family. Caregivers are not counted as part of the assistance unit, and are not subject to the work requirements. The amount of the child-only cash assistance grant is based solely on the number of children in the home. Child-only grants are not subject to time limits.

Visit <http://www.dphhs.mt.gov/hcsd/tanf/tanfeligibility.shtml> to learn more about the program and to determine your eligibility.

GET MORE
INFO...

Earned Income Tax Credit (EITC)

This credit is a supplement to the income of working individuals with children. Benefits vary depending on several circumstances—types and amounts of payments families receive from other agencies and amount of family earned income and family size.

Visit <http://www.irs.gov/individuals>

GET MORE
INFO...

Guardianship & Adoption Subsidies

Guardianship subsidies may be available for children exiting foster care and entering guardianship when the children are in the custody of the state, and under some circumstances, a Montana tribe. Subsidies are negotiated between the Child and Family Services Division and the prospective guardian(s) prior to establishment of guardianship. Subsidies may include any or all of the following: a monthly financial payment, Medicaid, and social services. A child must have been determined by the state to meet one or more of the following criteria when eligibility for a subsidy is being determined: the child has a physical, mental, or emotional disability or is recognized to be at high risk for developing such a disability; the child is a member of a minority group; the child is age six or older, or is a member of a sibling group being placed together.

Adoption subsidies may be available for children adopted from state and tribal foster care systems and in some other limited circumstances. Subsidies are negotiated between the Child and Family Services Division and the prospective adoptive parents, prior to finalization. Adoption subsidies can include any or all of the following: a monthly financial payment, Medicaid, social services, and a one-time reimbursement for costs to the family directly related to the finalization of the adoption (examples would be attorney fees or court costs). The state must determine that the child is legally free for adoption, cannot or should not return to the care of the birth parents, and meets one or more of the criteria for adoption subsidies. The State must also determine that an effort has been made to place the child without subsidy, except where contrary to the child's interests.

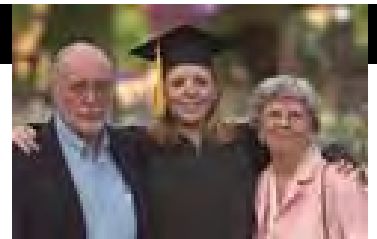
Visit <http://www.dphhs.mt.gov/cfsd/> for more information on both subsidies.

GET MORE
INFO...



Healthy Montana Kids

HMK is a free or low-cost health coverage plan. The plan provides health coverage to eligible Montana children and teenagers up to age 19. A child can qualify for HMK based on family size and income. There are no pre-existing condition limitations. Some parents share in the cost of their children's health care by paying a small co-payment when care is received. However, total co-payments for a benefit year will not exceed \$215 per family.



Applications for HMK are available at <http://hmk.mt.gov/>, by calling **(877) Kids Now, (877) 543-7669**, and in all Montana communities at county Offices of Public Assistance, health departments, health care facilities, WIC offices, Head Start facilities, and Indian Health Services.

GET MORE
INFO...

Medicaid and Healthy Montana Kids Plus

Montana **Medicaid** is health care coverage for some low-income adults. Medicaid is run by DPHHS (the Montana Department of Public Health and Human Services). **Healthy Montana Kids Plus** (HMK Plus) used to be called children's Medicaid, before October 1, 2009. HMK Plus is health care coverage for low-income children in Montana and is also run by DPHHS. All medically necessary services are provided to children covered by HMK Plus. The State of Montana pays about one-third of the cost of Medicaid and HMK Plus and the federal government pays the rest. The federal government makes basic laws and rules for Medicaid, but no two state Medicaid programs are exactly alike. This means even if you qualified for Medicaid in another state, you would still need to apply in Montana.

Visit <http://www.dphhs.mt.gov/programsservices/medicaid.shtml> to learn more about both programs and to apply online.

GET MORE
INFO...

DPHHS Senior and Long Term Care Division (SLTC)

Long Term Care is a general term describing a variety of medical, social and other services that are designed to meet the ongoing need for support and assistance people often experience as a result of the natural aging process, a severe disability, or an injury. Specific SLTC functions include: 1) administering programs for senior citizens funded through the **Federal Older Americans Act** such as meals on wheels, information referral services, senior centers, health services, congregate meal sites and transportation services; 2) protecting vulnerable senior citizens and persons with disabilities; and 3) educating the public about long-term care issues and services to help Montana address aging-related issues now and in the future.

Visit <http://www.dphhs.mt.gov/sltc>

GET MORE
INFO...

Big Sky Rx

Big Sky Rx (BSRx) is dedicated to helping Medicare clients pay for Medicare-approved prescription drug insurance premiums. It is administered by the State of Montana. You may apply at any time—enrollment is ongoing. Eligibility criteria:

- Montana is your primary state of residence.
- You're a Medicare recipient.
- Your income is less than \$22,340 (single person) or \$30,260 (two person household).
- Assets (Savings, Bonds, IRAs) are NOT considered income.

Visit <http://www.dphhs.mt.gov/prescriptiondrug/bigsky.shtml> for information and to apply online or call **(866) 369-1233**.

GET MORE
INFO...



MT DPHHS—Early Childhood Services Bureau

The mission of the Early Childhood Services Bureau, a division of MT DPHHS, is to improve the quality, affordability and accessibility of child care in Montana, with focused efforts on coordinated systems to best meet the needs of young children, their families, and the professionals who work on behalf of young children and families. Services include the Best Beginnings Child Care Scholarships, food programs, and school readiness programs.

Visit <http://www.dphhs.mt.gov/hcsd/childcare/>

GET MORE
INFO...

Montana Child Care Resource and Referral Agencies

This statewide network of community-based child care resource and referral agencies provide the following:

- Helps low income families find and pay for childcare.
- Offers referrals to licensed and registered child care facilities for families of all income levels.
- Initiates projects to build quality child care.
- Informs policy makers, businesses, and the public on child care related issues.
- Advocates for child care providers and families with children.

Visit <http://www.dphhs.mt.gov/hcsd/childcare/resourceandreferral/index.shtml>

to learn more and to get the list of agencies.

GET MORE
INFO...



Montana Head Start

Head Start is a comprehensive child development program that has served low-income families since 1965. Their child-focused program serves children from birth to five years of age and their families, with the goal of increasing school readiness of children from low-income families. Head Start provides a range of individualized services in the areas of education and early childhood development; medical, dental, and mental health; nutrition; and parent involvement which is responsive and appropriate to each child's and family's developmental, ethnic, cultural, and linguistic heritage and experience.

Visit <http://www.mtheadstart.org/> to find the Head Start agency in your area.

GET MORE
INFO...



Montana Office of Public Instruction

The Montana Office of Public Instruction's School Programs are designed and managed to support student success in a variety of ways. No matter the situation or needs, OPI school program staff make available events, training and resources, district and school progress monitoring, telecommunication discounts, homeless education, pupil transportation, prevention and intervention programs, student scholarships, nutrition information and services, and support for Montana's Title I schools. These programs help Montana's students, families, educators, and community members take steps toward guaranteeing a quality education for all students and building a better future for Montana.

Visit <http://opi.mt.gov> to learn more about OPI programs.

GET MORE
INFO...



Close Relative Registry

Close relatives (defined as grandparents, aunts, uncles, and adult siblings) of a child who may be placed in foster care can register with the DPHHS Child and Family Services Division. The close relative can then be considered as a placement for the child if the child is placed in foster care.

Call **(866) 820-5437** to be placed on the registry.

GET MORE
INFO...

Montana Supreme Court

The **Court Help Program** is a free service provided by the Montana Supreme Court to assist people with civil, non-criminal legal problems. Their goal is to give you the information you need to understand your legal rights and responsibilities and to help you resolve your legal problems on your own if you cannot afford an attorney or if you choose not to hire one. While they cannot give you legal advice or represent you in court, they can provide you with legal information and direct you to resources that will help you help yourself. The program operates full-time self help centers in six counties as well as many self help stations and kiosks throughout the State of Montana.

Visit <http://courts.mt.gov/selfhelp> to find the nearest center or kiosk.

GET MORE
INFO...

Montana Legal Services Association

The Montana Legal Services Association (MLSA) is a federally and privately funded program that provides free legal assistance in civil cases to people living on low incomes. To qualify for services, you must meet certain financial requirements and you must also be a U.S. citizen or a qualified alien. MLSA never charges a fee for services; however, you may have to pay court costs and filing fees.

What help can I find at MLSA?

- Legal advice and representation for clients; referrals to pro bono attorneys and other providers.
- Self-help clinics and materials; education brochures, classes and workshops.
- Landlord/tenant law; housing discrimination and other civil rights.
- Social Security Disability and other public benefits.
- Family law; domestic violence.
- Bankruptcy; consumer matters.
- Indian law; migrant workers' legal issues.

What does MLSA not handle?

- MLSA does not handle auto accidents, personal injury, business-related matters or any criminal cases (including traffic citations).
- MLSA usually does not accept ongoing cases for representation, such as changes to parenting plans or existing custody decrees.
- MLSA cannot accept cases where an attorney's fee may be available.

Visit <http://www.mtlsa.org> or call **(800) 666-6899** to speak to an intake worker.

GET MORE
INFO...

Montana Law Library

The Montana Law Library is a great resource you can use to try and answer some of your legal questions yourself or look up forms, etc. The staff at the state law library can often direct the public to helpful information.

Visit <http://courts.mt.gov/library> or call **(800) 710-9827**.

GET MORE
INFO...

Other Legal Assistance

Visit <http://www.montanalawhelp.org> for common legal information and resources.

GET MORE
INFO...



Women Infant Children (WIC) Program

The program's complete name is "Special Supplemental Nutrition Program for Women, Infants and Children." WIC helps infants and children (up to age five) and their guardians with nutritional education and counseling, referral to other health care and social programs, and payment vouchers for nutritious food packages. Grandparents raising young grandchildren can qualify by submitting proof of guardianship.



Visit <http://www.wic.mt.gov/>

GET MORE INFO...



Supplemental Nutrition Assistance Program (SNAP)

Effective October 1, 2008 the federal Food Stamp Program was renamed the Supplemental Nutrition Assistance Program (SNAP). The name change more accurately reflects the mission of providing supplemental food and nutrition assistance to low income people. SNAP recipients use EBT cards, which are similar to debit cards, to purchase food in authorized retail stores.

Visit <http://www.dphhs.mt.gov/hcsd/snap/index.shtml>

GET MORE INFO...

Additionally, **Montana State University Extension** offers two educational programs related to SNAP:

Supplemental Nutrition Assistance Program - Education (SNAP-Ed)

SNAP-Ed offers nutrition education to SNAP participants and persons eligible to receive benefits. Series lessons or single demonstrations are presented with practical information and skill-building tips for choosing healthier foods, preparing meals, learning appropriate food safety practices, modeling good food choices for family members, and incorporating ways to be more physically active. The goal is to provide people with the opportunity to acquire skills that assist in choosing healthy lifestyles.

Expanded Food and Nutrition Education Program (EFNEP)

For 40 years, MSU EFNEP has assisted limited resource audiences in acquiring knowledge, skills, attitudes, and changed behavior necessary for nutritionally sound diets. Ultimately, the goal is to contribute to personal development and improvement of the total family diet and nutritional well-being. EFNEP targets youth and limited-resource adults with children under the age of 19, and reaches individuals through series of sessions and demonstrations. Through EFNEP, participants learn self-worth, and that they have something to offer their families and society.

Visit <http://www.msuextension.org/nep/>

GET MORE INFO...

Food Banks

Many organizations provide free food and sometimes other items such as diapers and toiletries.

The most complete listing of Montana food banks can be found at <http://www.mfbn.org/>

GET MORE INFO...

Other Food & Nutrition Programs

Many other programs such as elderly nutrition, summer food service, and food distribution on Indian Reservations are available.

Visit <http://www.nutrition.gov/food-assistance-programs> to learn more about these and other food and nutrition assistance programs.

GET MORE INFO...

Other Useful Contacts



Montana Children's Trust Fund

The Montana Children's Trust Fund is a DPHHD program with the following priorities:

- Funding effective, primary prevention programs in local communities throughout Montana and enhancing communities' capacity to prevent child abuse and neglect by allocating CTF funds annually for primary and secondary child abuse and neglect prevention programs to community-based organizations.
- Supporting public education (such as conferences, workshops, and seminars) that increase participants' knowledge and understanding of child abuse and neglect prevention, and strengthening families and communities.
- Promoting the five protective factors.
- Increasing positive parenting skills that ensure the health, safety and well-being of children.



Visit <http://www.dphhs.mt.gov/childrenstrustfund/>

GET MORE
INFO...

Area Agencies on Aging

Montana's Area Agencies on Aging are public or private non-profit agencies, designated by the Aging Services Bureau, to address the needs and concerns of older Montanans at the local level. In Montana, there is one toll free telephone number to call that will ring into your local Area Agency on Aging; that number is **(800) 551-3191**.

Visit <http://www.dphhs.mt.gov/sltc/services/aging/areaagenciesonaging.shtml> for more information on local offices.

GET MORE
INFO...

Human Resource Development Councils

Ten Human Resource Development Councils (HRDCs) across the state help connect low-income, elderly, minority, and disabled Montanans with programs aimed at alleviating poverty and providing educational and training opportunities.

Visit <http://www.dphhs.mt.gov/contactus/humanresourcedevelopmentcouncils.shtml> to find your local HRDC.

GET MORE
INFO...

Senior Centers

Montana has many senior centers where seniors can find support, resources and companionship.

Visit <http://www.newlifestyles.com/statesearch/Montana/Senior+Centers> for the most complete listing of centers in Montana.

GET MORE
INFO...

NOTES



Other Useful Phone Numbers and Websites

Alcohol and Drug Services

- Montana Tobacco Quit Line (800) QUIT-NOW
- Montana Chemical Dependency Center (406) 496-5400
- Addictive & Mental Health Disorders (406) 444-3964

Disabilities

- Special Olympics (800) 242-6876
- Montana Independent Living Project (800) 735-6457
- Montana Advocacy Program (800) 245-4743; Voice/TDD (406) 449-2344;
<http://www.disabilityrightsmt.org>

Employment

- Department of Labor and Industry (406) 444-4100;
Workforce Services Division <https://www.jobs.mt.gov>

Financial

- Temporary Assistance for Needy Families (TANF) (406) 444-1788; (406) 444-5902
- Low-Income Energy Assistance (LIEAP) (800) 332-2272
- Women, Infants, Children (WIC) (800) 433-4298; (406) 444-5533
- Indian Child Welfare Act - Child and Family Services Division <http://www.dphhs.mt.gov/cfsd/icwa/index.shtml>

Food & Nutrition

- Supplemental Nutrition Assistance Program (SNAP) (406) 994-6318
- Montana Food Bank Network (800) 809-4752; [http:// www.mfbn.org](http://www.mfbn.org)
- Child and Adult Care Food Program (888) 307-9333;
<http://www.dphhs.mt.gov/hcsd/childcare/cacfp/>

Health—Mental, Emotional, Physical

- The National Alliance for the Mentally Ill (703) 524-7600
- Montana Mental Health Services Plan (800) 624-3958
- Mental Health America (800) 273-8255
- State Mental Health Service Bureau Info Line (800) 866-0328
- Medicaid Help Line (800) 363-8312
- Medicare Information Line (800) 633-4227
- Veteran Administration (psychiatric and meds) (800) 827-1000
- State Mental Health Ombudsman (888) 444-9669
- Poison Control Center (800) 222-1222
- Montana Dental Association (888) 449-9670
- Nurse First (800) 330-7847
- Montana Healthcare Programs Help Line (800) 362-8312
- Montana Healthy Kids (877) 543-7669; <http://www.hmk@mt.gov>
- Suicide Prevention Hotline (800) 273-TALK
- National Hope Line Network (800) 784-2433
- YAH—Youth America Hotline (877) 968-8454

Legal

- Montana Legal Aid (800) 999-4941
- Montana Legal Services Helpline (800) 999-4941
- Child Support Enforcement Division (406) 346-5437
- National Child Abuse Helpline (800) 422-4453
- Foster Care and Relative/Kinship Care Contacts (406) 841-2400; <http://www.dphhs.mt.gov/cfsd>
Montana Child and Family Services Division

Native American Elder Family Caregiver Support Program at the Blackfeet Eagle Shield Center

The **Native American Elder Family Caregiver Support Program** is one of several programs the Blackfeet Eagle Shield Center offers. The Elder Family Caregiver Support Program provides support for Blackfeet Native American caregivers residing on the Blackfeet reservation, who care for elders, or who are elders caring for disabled, handicapped, or minor children. The program has a network of community resource providers to help caregivers locate appropriate resources and services. The Elder Family Caregiver Support Program offers a Grandparents Raising Grandchildren Support Group, a Caregiver Support Group, training sessions, a resource directory, training manuals, health information, and a book and video library.



Contact Carrie Bear Chief-Evans at **(406) 338-7257**; **(406) 338-7906**; **respite@3rivers.net**.

GET MORE
INFO...

National Indian Child Welfare Association

The National Indian Child Welfare Association (NICWA) works to address the issues of child abuse and neglect through training, research, public policy, and grassroots development. NICWA also works to support compliance with the **Indian Child Welfare Act of 1978 (ICWA)**, which seeks to keep American Indian children with American Indian families. NICWA improves the lives of American Indian children and families by helping tribes and other service providers implement services that are culturally competent, community-based, and focused on the strengths and assets of families. This work includes collaborating with tribal and urban Indian child welfare programs to increase their service capacity, enhance tribal-state relationships, and provide training, technical assistance, information services, and alliance building.

Visit <http://www.nicwa.org> or call **(503) 222-4044**.

GET MORE
INFO...

Tribal Temporary Assistance for Needy Families (TANF)

TANF is a cash assistance program for families with children, which promotes the values of work, responsibility, and family. Rules and requirements may be different for Native American families so use the following contacts for information.

Blackfeet

Contact: <http://www.blackfeetmanpower.fatcow.com/4548.html>; (406) 338-2111

Eligibility Requirements: 100% Blackfeet Enrolled Members (whole family); unemployed living on Reservation and the communities of Cut Bank, Valier and Dupuyer. Tribal TANF benefits received under Blackfeet TANF Plan are not countable towards the TANF 60-month time limit unless the household is living in a community served by the Blackfeet Tribal Plan but does not reside with the geographical boundaries of the reservation.

Confederated Salish and Kootenai Tribes (CSKT)

Contact: (406) 675-2700 ext. 1049; Email: tereswm@cskt.org

Eligibility Requirements: To be considered eligible for the CSKT TANF Plan, the family must contain at least one enrolled member of the CSKT and reside within the geographical boundaries of the Flathead Reservation. Tribal TANF benefits received under the CSKT Tribal TANF Plan are countable towards the TANF 60-month time limit as the Flathead Reservation does not qualify for the federal exclusion based on having less than 50% unemployment rate.

Fort Belknap Indian Community (FBIC)

Contact: (406) 353-8376 ext. 222; Email: teschahawley@hotmail.com

Eligibility Requirements: To be considered eligible for the FBIC TANF Plan, the family must contain at least one enrolled member of a federally recognized Indian tribe and reside in Blaine County or on the Fort Belknap Reservation in Phillips County (even if the mailing address is Harlem or Dodson). Tribal TANF benefits received under the FBIC Tribal TANF Plan are not countable towards the TANF 60 month time limit unless the household is living in Dodson or Harlem.



Tribal Temporary Assistance for Needy Families (TANF), cont.

Chippewa Cree Tribes (CCTT)

Contact: <http://www.rockyboy.org/Tanf/tanf.htm>; (406) 395-5814; Email: elainetopsky@hotmail.com

Eligibility Requirements: To be considered for the CCTT Tribal TANF Plan the family must include at least one child or caretaker relative (excluding step-parents) who is enrolled or eligible to be enrolled in a federally recognized tribe and reside in Hill County or the portion of Choteau County within the exterior boundaries of the Tribe's Reservation. Tribal TANF benefits received under the CCTT Tribal TANF Plan are not countable towards the TANF 60 month time limit unless the household is living in Hill County but is not living within the geographical boundaries of the reservation.

Crow

Crow Agency Contact: (406) 638-3715; PO Box 159; Crow Agency, MT 59022

Big Horn County Office of Public Assistance Contact: (406) 665-8700; PO Box 426; 23 W 8th Street; Hardin, MT 59034

Yellowstone County Office of Public Assistance Contact: (406) 237-0520; 111 North 31st Street; Billings, MT 59101

Fort Peck

Fort Peck Agency Contact: (406) 768-5311; (406) 768-5155; PO Box 1027; Poplar, MT 59255

Roosevelt County Office of Public Assistance Contact: (406) 653-1210; Courthouse Building; Wolf Point, MT 59201

Valley County Office Of Public Assistance Contact: (406) 228-4022; 501 Court Square; Box 9; Glasgow, MT 59230

Daniels/Sheridan County Office of Public Assistance Contact: (406) 765-1370; 100 West Laurel Avenue; Plentywood, MT 59254

Northern Cheyenne

Big Horn County Office of Public Assistance Contact: (406) 665-8700; PO Box 426; 23 W 8th Street; Hardin, MT 59034

Rosebud County Office of Public Assistance (Lame Deer Office) Contact: (406) 477-6251; PO Box 276; Lame Deer, MT 59043

Rosebud County Office of Public Assistance (Forsyth Office) Contact: (406) 346-2563; 121 North 11th Avenue; PO Box 5016; Forsyth, MT 59327

GRG Project Contacts on Montana Indian Reservations

Blackfeet Indian Reservation

Carrie Bear Chief-Evans/Connie Bremner, Eagle Shield Center; (406) 338-7257

Rocky Boy's Indian Reservation

Mary St. Pierre, Stone Child College & MSU Extension; (406) 395-4875

Fort Peck Indian Reservation

Carol Bemer; (406) 768-2430

Crow Indian Reservation

Janice Eckman, Parent Place; (406) 665-4151

Northern Cheyenne Indian Reservation

Kay Medicine Bull, Boys & Girls Club of the Northern Cheyenne Nation; (406) 477-6654

Fort Belknap Indian Reservation

Liz Werk, MSU Extension; (406) 353-2656

Flathead Indian Reservation

Nori Pearce, MSU Extension; (406) 676-4271

This project has received funding support from:

The Brookdale Foundation of New York

The Montana CYFAR Building
Community Strengths Project

The Montana Children's Trust Fund

Montana Department of Public
Health and Human Services

Beim Foundation

MSU College of Education,
Health and Human Development

Dennis & Phyllis Washington Foundation

Montana AARP

Kappa Omicron Nu



Family and Human Development Program

316 Herrick Hall
P.O. Box 173540
Bozeman, MT 59717-3540

Tel: (406) 994-3395
Fax: (406) 994-2013
Email: grg@montana.edu
Web: www.montanagrandparents.org

The U.S. Department of Agriculture (USDA), Montana State University and the Montana State University Extension prohibit discrimination in all of their programs and activities on the basis of race, color, national origin, gender, religion, age, disability, political beliefs, sexual orientation, and marital and family status. Issued in furtherance of cooperative extension work in agriculture and home economics, acts of May 8 and June 30, 1914, in cooperation with the U.S. Department of Agriculture, Jeff Bader, Director of Extension, Montana State University, Bozeman, MT 59717